

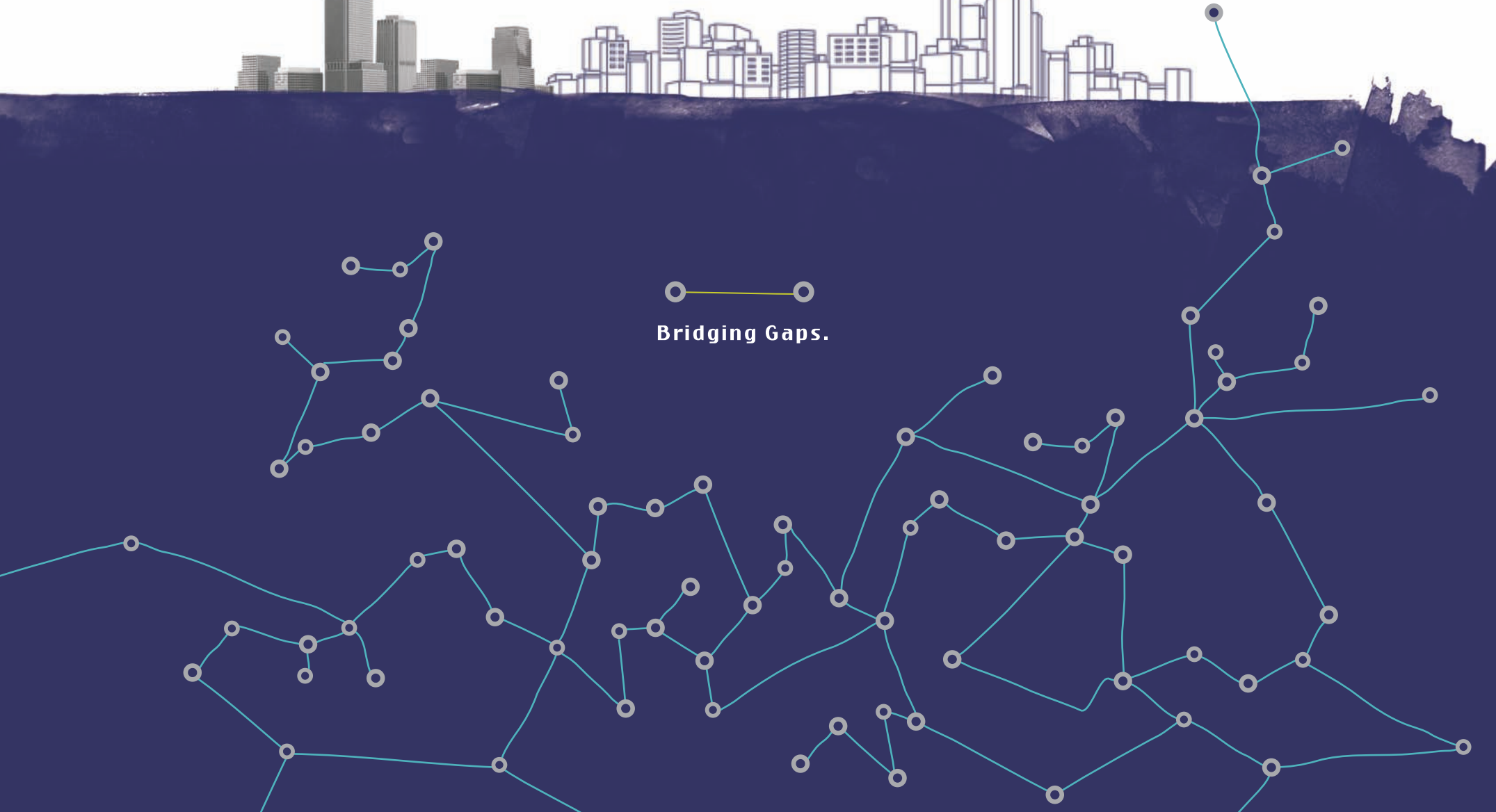


**1.85mm, 2.4mm, 2.92mm,
3.5mm, SMP, SSMA**

**RF / Microwave Coaxial Connectors &
Cable Assembly**



Bridging Gaps.







FRONTLYNK. BRIDGING GAPS.

Over the last few decades, the world has become considerably smaller. The development of communications and travel has meant that no part of the world is ever too far or too remote to be reached by modern day man.

However, no matter how big the gap between two points of communication is, no matter how complicated the route, it all starts with a simple connection.

Frontlynk is all about connections, and 'Bridging Gaps' is our business.

We connect products to each other via our versatile range of connectors.

We connect to people with our reliable and flexible approach to business.

In our own small way,

Frontlynk is the indispensable little link in the communication chain,
virtually unnoticed, but critically important.

FRONTLYNK. BRIDGING GAPS.





Bridging To Our Team.

The Frontlynk team has been in this business long enough to realize that when it comes to being unique, a product such as a connector is simply not enough.

Undeniably, the quality and range of our products are an important element of our proposition. However, what makes our customers come back to Frontlynk again and again lies in our company culture.



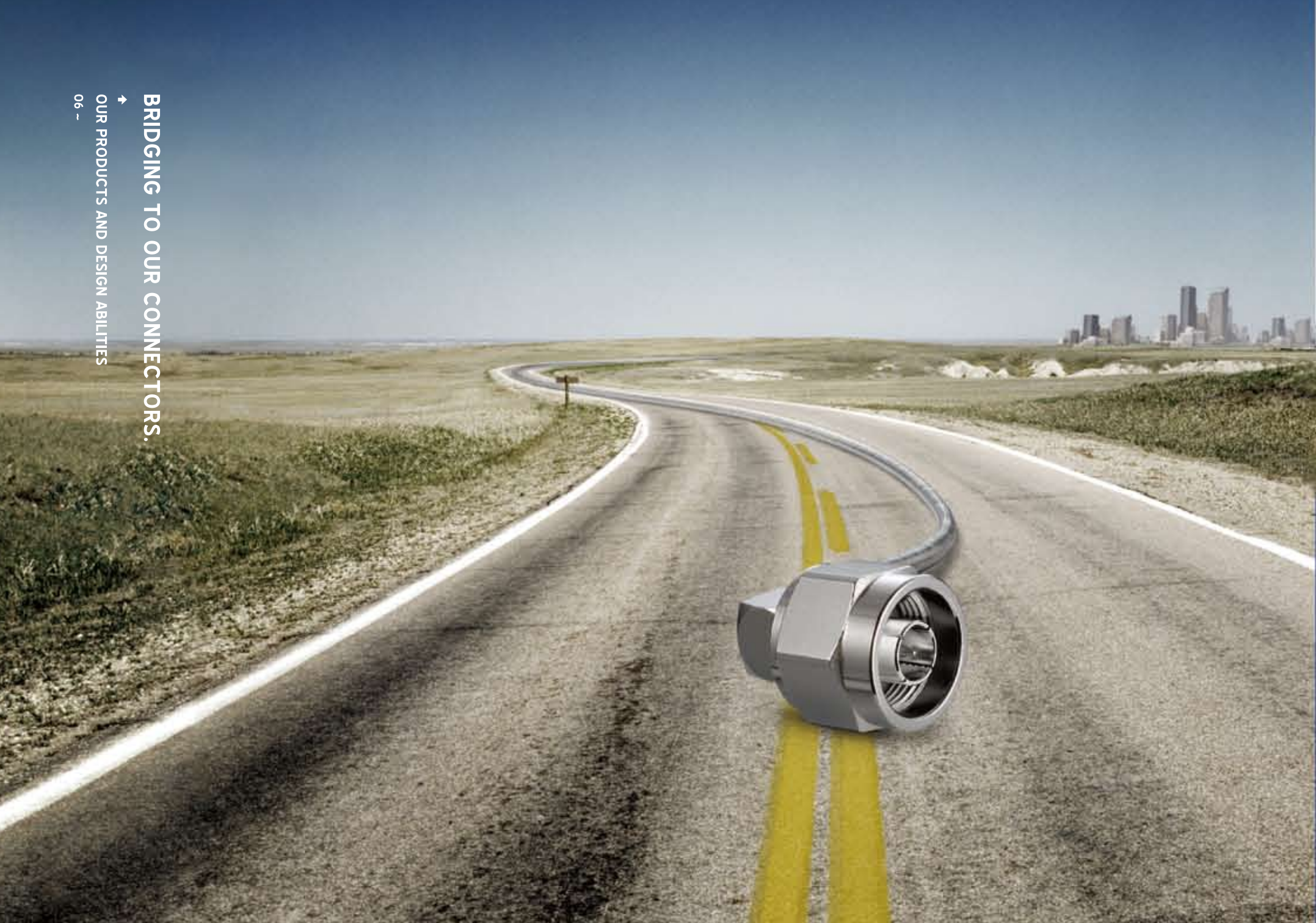
We are certainly not the biggest supplier in the world, neither are we the most famous. This is what makes our strength; We are the young and energetic team from Taiwan that is ready to try that little bit harder, ready to be that little bit more flexible to match our clients' needs, just to remain on the map and make ourselves heard in this crowded market.

With a 'can-do' attitude,

Frontlynk management and staff alike treat each business opportunity with the type of open mind and flexibility that ever increasing customized requirements deserve. Furthermore, we realize that repeat business can only be achieved by getting it right every time, in an atmosphere of trust and honesty.

FRONTLYNK CONNECTS TO ITS PEOPLE.



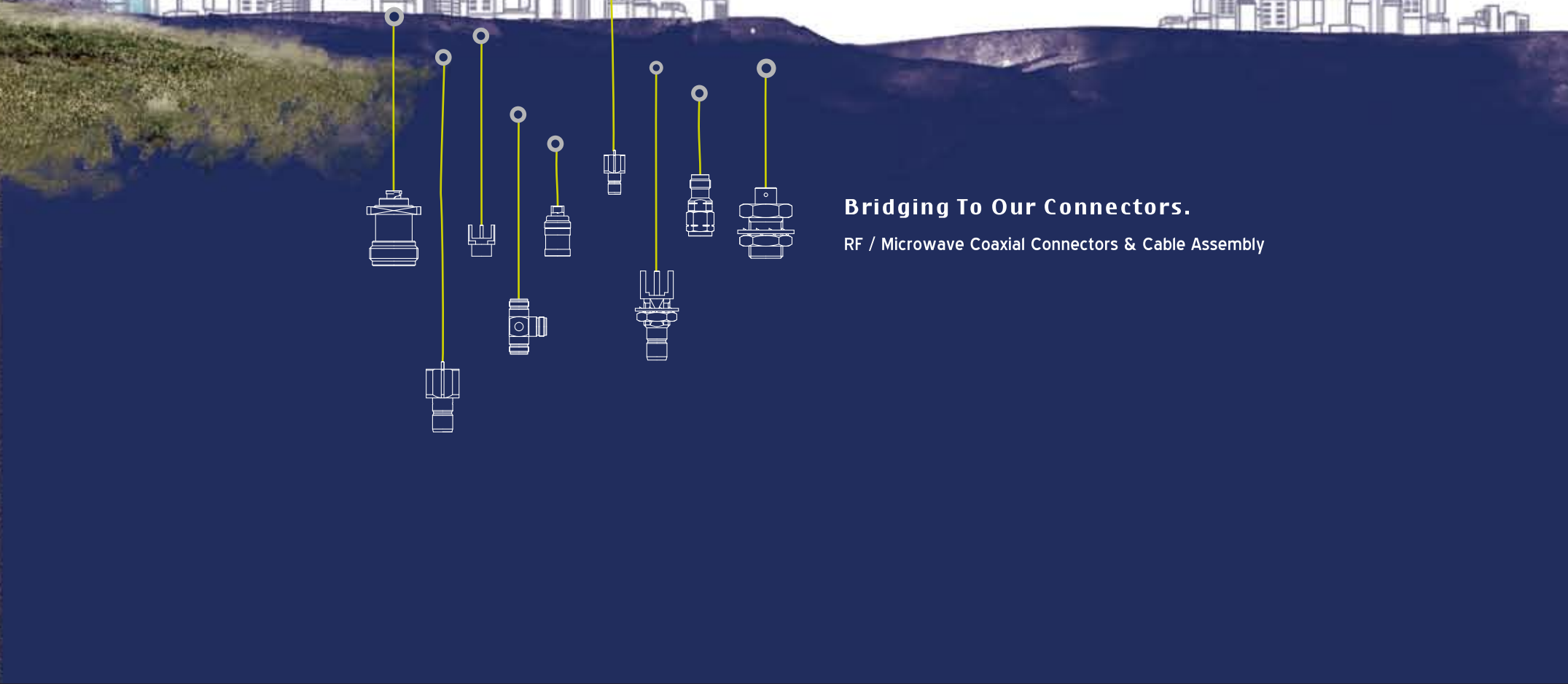


BRIDGING TO OUR CONNECTORS.



OUR PRODUCTS AND DESIGN ABILITIES

06 -



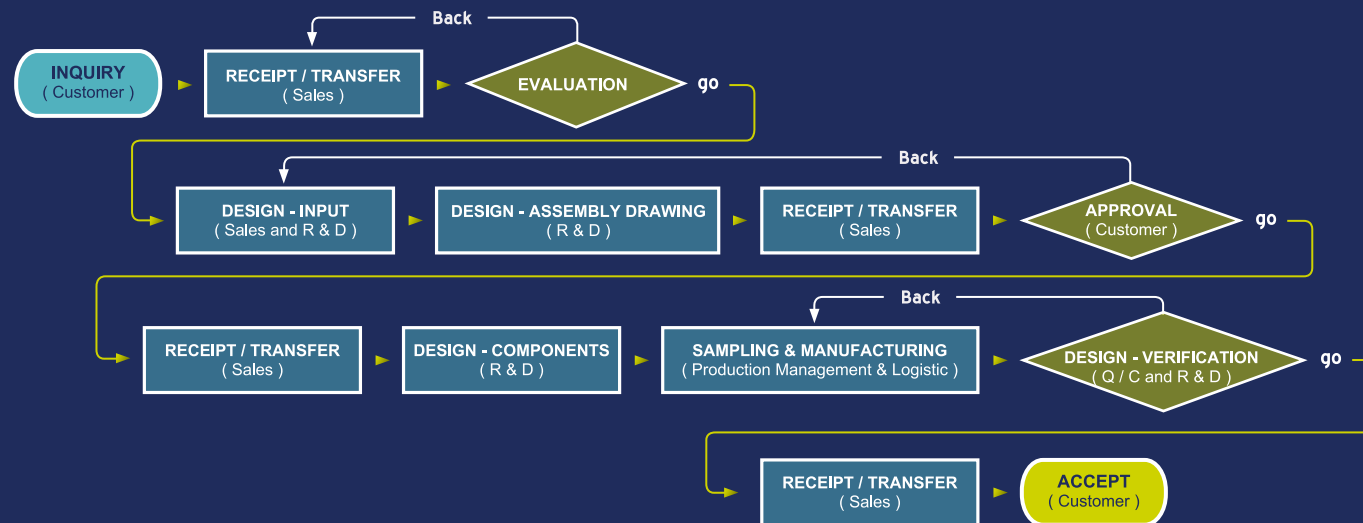
Bridging To Our Connectors.

RF / Microwave Coaxial Connectors & Cable Assembly

Frontlynk is the brand behind production of quality RF Connectors and cable assembly items. The range of Frontlynk's products underline a versatile market demand across many geographical markets.

As a manufacturer, Frontlynk naturally places a lot of emphasis on the supply and delivery of its connectors. The production process leaves nothing to chance and is the result of extensive research involving the critical factors: Operating Frequency, Characteristic Impedance, Skin Effect, Cutoff Frequency, Intermodulation, Voltage and Power Rating, Leakage, etc.

DESIGN PROCESS:





BRIDGING TO OUR CONNECTORS.

Once the stringent technical requirements of our clients have been met in the research lab, it is down to Frontlynk's high performing facilities and machines to transform design into physical products. In the production area, PowerStrip 9500RS stripping machines from Switzerland transform our know-how into products.

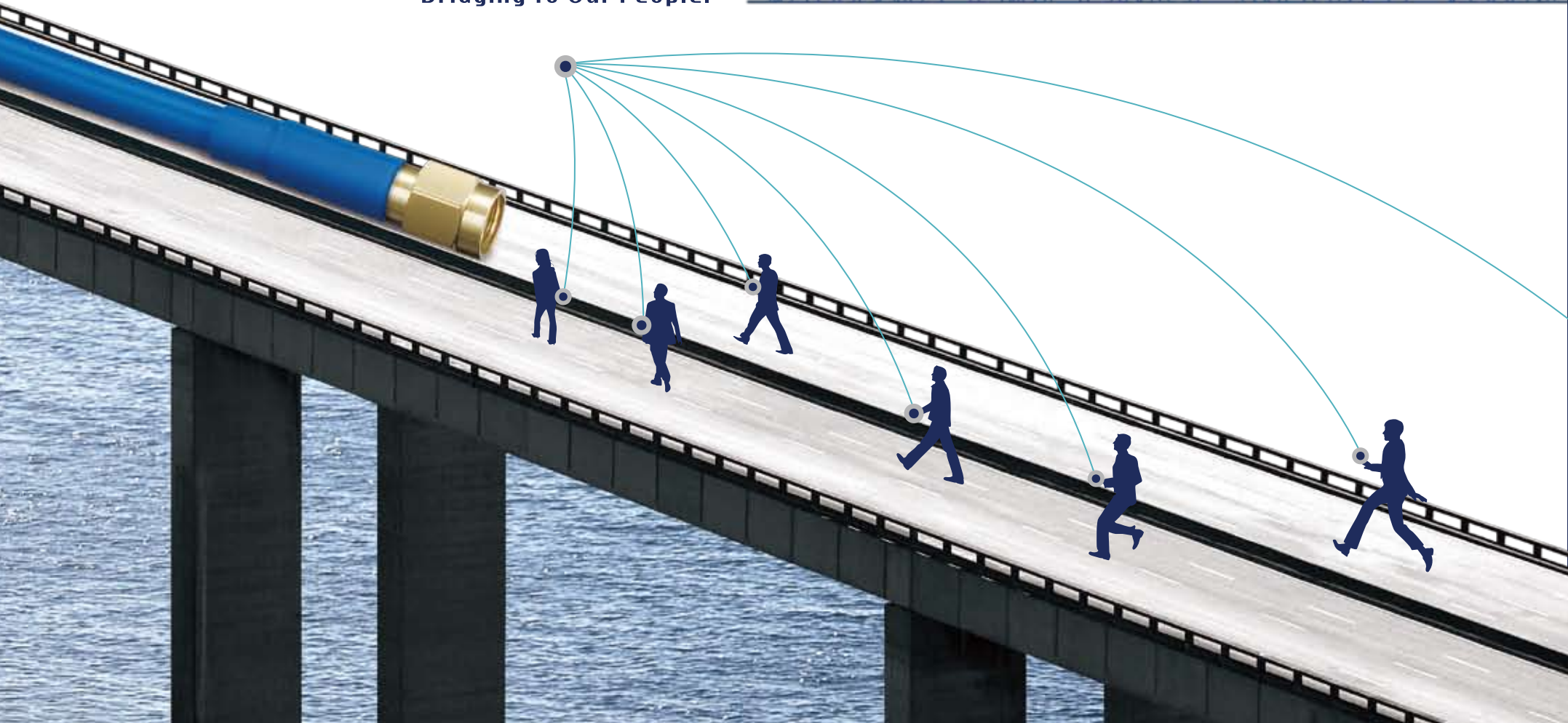
The strict quality control requirements of ISO 9001/2008 are faithfully adhered to at Frontlynk as we view reliability and efficiency as two of the most important values of our brand, and it starts in the factory. Whether it is incoming QC (IQC), process QC (PQC) or final QC (FQC), materials and finished goods are examined for consistency at each stage of the manufacturing process.

In addition, Frontlynk carries out a wide range of testing to ensure that what leaves our doors ends up in our client's premises in perfect condition:

- (⚡) **ELECTRICAL TESTING:** Frontlynk has specialized testing instruments to examine all types of products' return loss, VSWR, conductor impedance, insulation impedance, and withstanding voltage in order to meet international regulations.
- (↔) **MECHANICAL TESTING:** Retention testers examine all products' stress, pressure, and damage tolerance.
- (☁) **ENVIRONMENT TESTING:** We regularly conduct salt spray testing in order to ensure that the electroplating of each component meets the **MIL** standard.

FRONTLYNK. PRODUCTS THAT CONNECT.

Bridging To Our People.



Service is one area where we know that Frontlynk can make a real difference.

Our products are able to compete with what is on offer in the market and we are confident in our manufacturing and R&D ability. Moreover, we have the right people for the job, and we ensure that they have the opportunity to maintain and develop their skills in their field in order to pass that know-how benefit to the client.

Frontlynk staff is specifically trained to provide an all-round service to our clients, from technical problem solving to friendly and efficient advice or support. Regardless of our client's requirements, Frontlynk will combine its resources to provide comprehensive service from design, development, trial-run, mass production, shipment, and after-sales service to its customers.

As an outfit that is keen to increase its size and reputation in the market, Frontlynk is hungry to prove its ability and is always willing to go the extra mile with all its requests. We do not discriminate when it comes to service and for us, a satisfied customer is our bottom line.

FRONTLYNK. UNDERSTANDING OUR CLIENTS.



MODEL NUMBER SYSTEM-CONNECTOR

FL



SERIES

- 01 UNSPECIFIED SERIES
- 20 R/P BNC
- 23 R/P N
- 24 R/P TNC
- 28 R/P SMA
- 33 1.85
- 34 2.4
- 35 3.5
- 38 2.92
- 40 MC CARD
- 51 SSMB
- 52 SSMA
- 60 TRB
- 61 MINI BNC
- 62 MMBX
- 63 SMS
- 64 DIN 41626
- 65 SMP
- 66 QDS
- 68 FAKRA
- 69 BMA
- 70 BNC
- 71 SOLDERLESS
- 72 F
- 73 N
- 74 TNC
- 75 UHF
- 76 MINI UHF
- 77 RCA
- 78 SMA
- 79 PAL
- 80 FME
- 81 CABLE TERMINAL
- 82 G
- 90 7/16
- 91 SMB
- 92 1.6/5.6
- 93 BT43
- 94 STANDARD COAX PATCHING
- 95 MINIATURE COAX PATCHING
- 96 MCX
- 97 MMCX
- 98 SMC
- 99 1.0/2.3

GENDER

- P PLUG
- B PLUG/PLUG
- C PLUG/PLUG/PLUG
- D PLUG/JACK/PLUG
- E PLUG/JACK
- J JACK
- G JACK/JACK
- H JACK/JACK/JACK
- K JACK/PLUG/JACK
- Z OTHERS

DETAILS

- A BULKHEAD, FRONT MOUNT
- B BULKHEAD, REAR MOUNT
- C BULKHEAD, FRONT MOUNT W/ GASKET
- D BULKHEAD, REAR MOUNT W/ GASKET
- E 2 HOLES PANEL
- F 4 HOLES PANEL
- G 2 HOLES PANEL W/GASKET
- H 4 HOLES PANEL W/GASKET
- J PANEL
- K LOCK CLIP (FAKRA)
- L END LAUNCH
- N NO DETAILS
- P CAP
- Q QUICK
- R PRESS IN
- T TERMINATOR CAP W/CHAIN
- Y ISOLATED, FRONT MOUNT
- Z ISOLATED, REAR MOUNT

MT. TYPE








- 1 CABLE, CRIMP
- 2 CABLE, SOLDER
- 3 CABLE, TWIST
- 4 CABLE, CLAMP
- 5 PCB, MOUNT
- 6 PCB, SMT
- 7 PCB, END LAUNCH
- 8 ADAPTOR
- 9 PANEL MOUNT
- 0 OTHERS

OUTLINE

- N OTHERS
- R RIGHT ANGLE
- S STRAIGHT
- T T TYPE
- U U LINK
- Y Y LINK
- F F LINK

CABLE GROUPS

RECEPT. TYPE

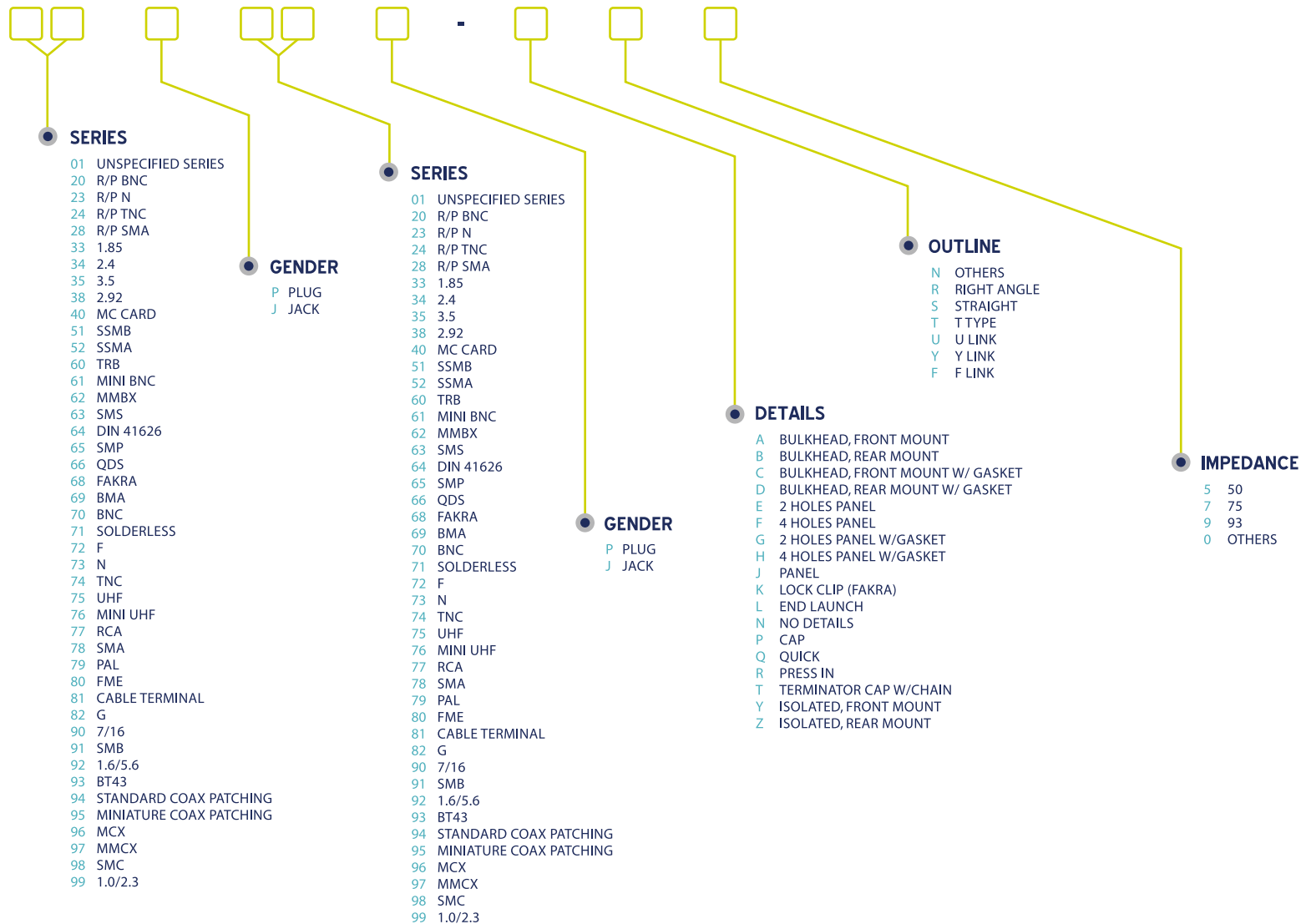
- 00 OTHERS
- 01 SOLDER CUP 
- 02 BLUND POST 
- 03 SLOT 
- 04 HALF ROUNT 
- 05 ACCEPTS PIN 
- 06 TAB 
- 07 EXPOSED TEFLON 

IMPEDANCE

- 5 50
- 7 75
- 9 93
- 0 OTHERS

MODEL NUMBER SYSTEM-BETWEEN SERIES ADAPTOR

FL



CONTENT



↑
CONTENT
14 ~

15~20
1.85mm Series

21~26
2.4mm Series

27~32
2.92mm Series

33~36
3.5mm Series

37~42
SMP Series

43~47
SSMA Series



1.85mm

CONNECTOR SERIES

INTERFACE MATING DIMENSIONS SPECIFICATIONS

CONTENT:

- Direct Solder Plug
- Direct Solder Jack
- Panel Recept Plug-Accepts Pin
- Panel Recept Jack-Accepts Pin
- Plug To Plug Adaptor
- Plug To Jack Adaptor
- Jack To Jack Adaptor

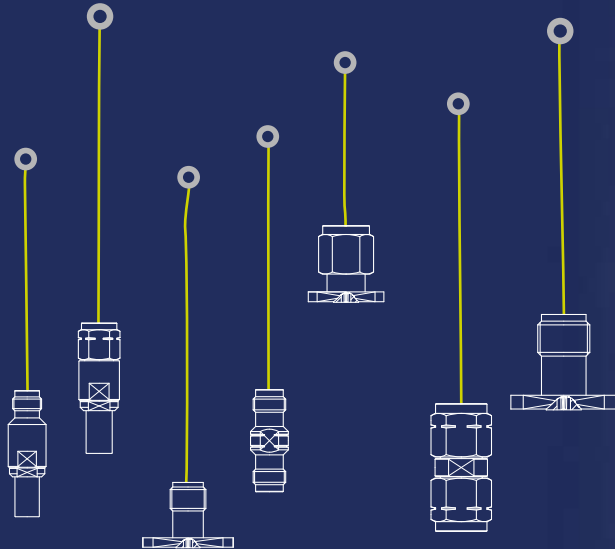
Bridging Gaps



1.85mm series

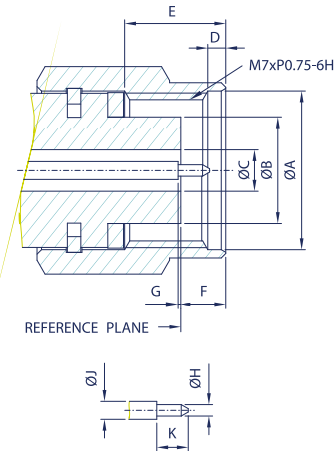
The 1.85mm was designed to go beyond the SMA interface constraints, and as a result is NOT SMA compatible. Instead, maximum performance to the highest possible frequency that the geometry would allow, along with repeatable measurements after hundreds or even thousands of interconnects, were the design goals.

The connector outer conductor ID is 1.85 mm, and OD is 4.7 mm, allowing compatibility, so that the 1.85mm connector mates with the 2.4mm connector and has the same ruggedness. It's a 50 Ohms connector with performance up to 67 GHz.

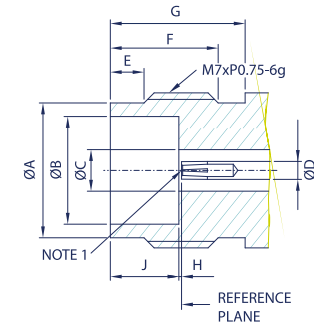


INTERFACE MATING DIMENSIONS

PLUG /



JACK /



PLUG		
Letter	Millimeters	
	Minimum	Maximum
A	7.01	7.11
B	4.72	4.75
C	1.84	1.86
D	0.51	0.76
E	4.37	4.62
F	1.86	2.45
G	0	0.08
H	0.5	0.52
J	0.79	0.81
K	1.34	1.44

JACK		
Letter	Millimeters	
	Minimum	Maximum
A	5.79	5.89
B	4.77	4.79
C	1.84	1.86
D	0.79	0.81
E	1.40	1.65
F	4.81	5.06
G	5.99	-
H	0	0.08
J	3	3.1

NOTE 1: I.D. TO MEET VSWR AND CONTACT RESISTANCE WHEN MATED WITH 0.5 / 0.52 MM DIA. PIN.

SPECIFICATIONS

Electrical /

Impedance	50 Ohm	
Frequency Range	0 - 67 GHz	
Insertion Loss	$0.05 \times \sqrt{F(\text{GHz})}$ dB Max.	
VSWR	1.3 Max.	
Contact Resistance	Center Contact	4 Milliohms Max.
	Outer Contact	2.5 Milliohms Max.

Material /

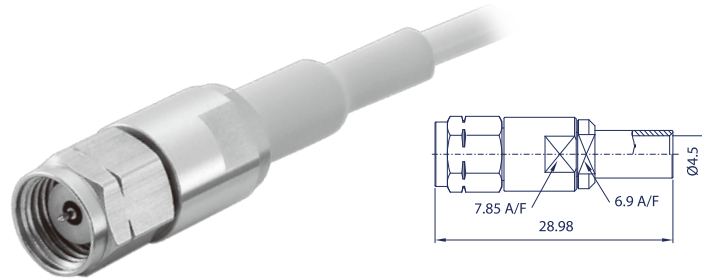
Parts Name	Material	Finish
Body, Metal Parts	Stainless Steel per QQ-S-764	Passivated
Center Contacts	Male: Beryllium copper per QQ-C-530	Gold 50 micro-inches
	Female: Beryllium copper per QQ-C-530	Gold 50 micro-inches
Insulators	Rexolite	None

NOTE: Other Material / Finish is Available on Request.

Mechanical & Environmental /

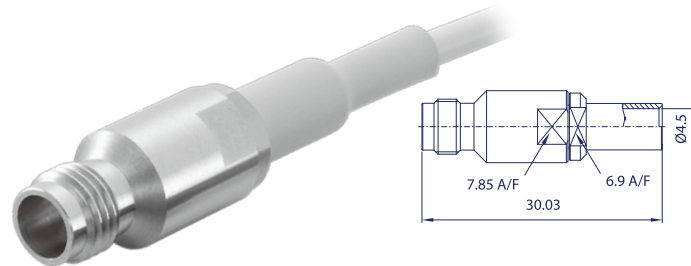
Coupling Torque Recommended	0.8 Nm...1.1 Nm
Coupling Proof Torque	1.65 Nm
Durability (Mating)	500 cycles Min.
Temperature Range	-40°C to 85°C

1.85mm series



DIRECT SOLDER PLUG

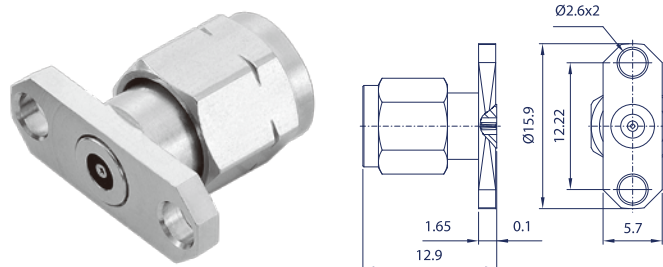
Model No.	Cable Group	Impedance
FL33P2-NS5	RG-405 (.085", .086"), SS-405 IW 1251	50



DIRECT SOLDER JACK

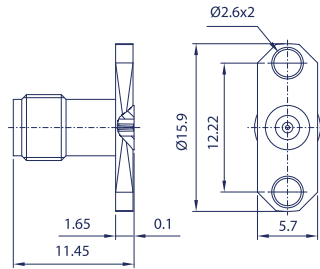
Model No.	Cable Group	Impedance
FL33J2-NS5	RG-405 (.085", .086"), SS-405 IW 1251	50

18



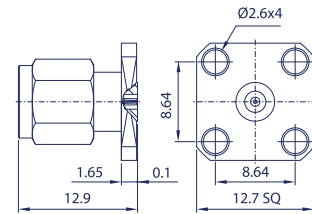
PANEL RECEIPT PLUG-ACCEPTS PIN

Model No.	Cable Group	Impedance
FL33P9-ES505	N/A	50



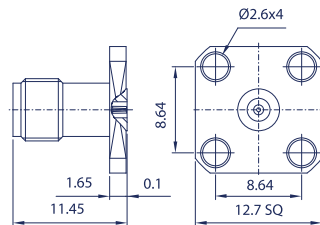
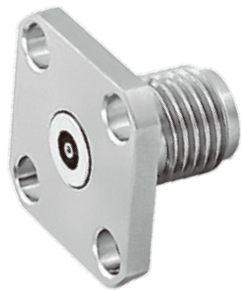
PANEL RECEIPT JACK-ACCEPTS PIN

Model No.	Cable Group	Impedance
FL33J9-ES505	N/A	50



PANEL RECEIPT PLUG-ACCEPTS PIN

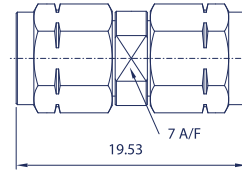
Model No.	Cable Group	Impedance
FL33P9-FS505	N/A	50



PANEL RECEIPT JACK-ACCEPTS PIN

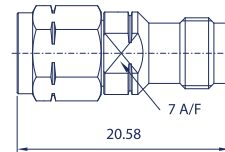
Model No.	Cable Group	Impedance
FL33J9-FS505	N/A	50

1.85mm series



PLUG TO PLUG ADAPTOR

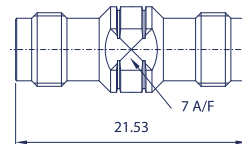
Model No.	Cable Group	Impedance
FL33B8-NS5	N/A	50



PLUG TO JACK ADAPTOR

Model No.	Cable Group	Impedance
FL33E8-NS5	N/A	50

20



JACK TO JACK ADAPTOR

Model No.	Cable Group	Impedance
FL33G8-NS5	N/A	50

2.4mm

CONNECTOR SERIES

INTERFACE MATING DIMENSIONS SPECIFICATIONS

CONTENT:

- Direct Solder Plug
- Direct Solder Jack
- Panel Recept Plug-Accepts Pin
- Panel Recept Jack-Accepts Pin
- Plug To Plug Adaptor
- Plug To Jack Adaptor
- Jack To Jack Adaptor

Bridging Gaps

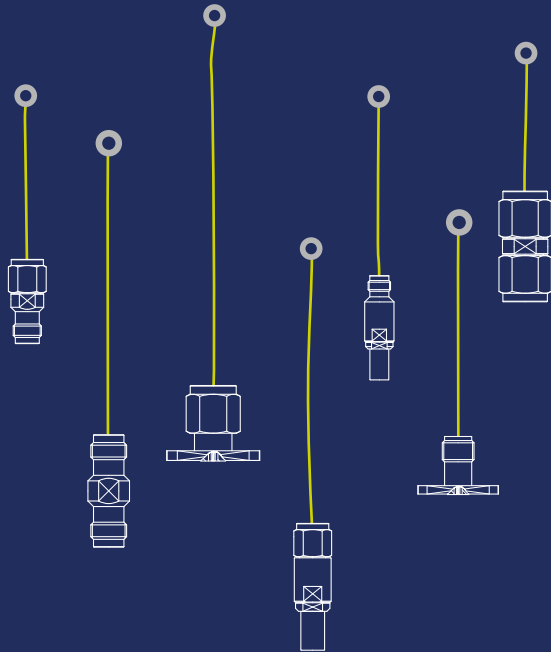


2.4mm series

The 2.4mm series was designed to eliminate the fragility of the SMA and 2.92mm connectors by increasing the outer wall thickness and strengthening the female fingers.

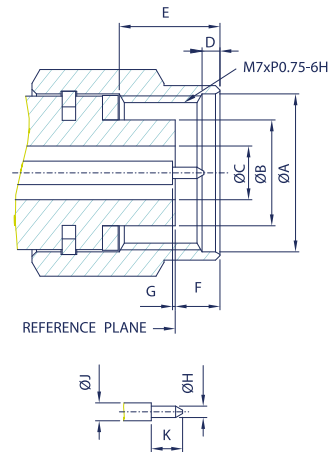
The outer contact ID is 2.4 mm, and OD is 4.7 mm.

The performance is up to 50 GHz.

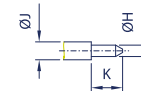
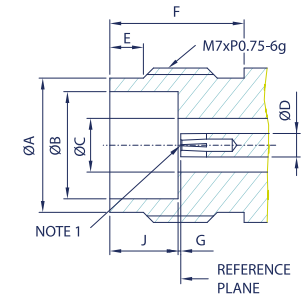


INTERFACE MATING DIMENSIONS

PLUG /



JACK /



PLUG		
Letter	Millimeters	
	Minimum	Maximum
A	7.01	7.11
B	4.72	4.75
C	2.39	2.41
D	0.51	0.76
E	3.56	3.81
F	1.85	2.67
G	0	0.08
H	0.5	0.52
J	1.03	1.05
K	1.35	1.45

JACK		
Letter	Millimeters	
	Minimum	Maximum
A	5.79	5.89
B	4.77	4.79
C	2.39	2.41
D	1.03	1.05
E	1.40	1.65
F	5.99	-
G	0	0.08
H	3	3.1

NOTE 1: I.D. TO MEET VSWR AND CONTACT RESISTANCE WHEN MATED WITH 0.5 / 0.52 MM DIA. PIN.

SPECIFICATIONS

Electrical /

Impedance	50 Ohm	
Frequency Range	0 - 50 GHz	
Insertion Loss	$0.05 \times \sqrt{F(\text{GHz})}$ dB Max.	
VSWR	1.3 Max.	
Contact Resistance	Center Contact	4 Milliohms Max.
	Outer Contact	2.5 Milliohms Max.

Material /

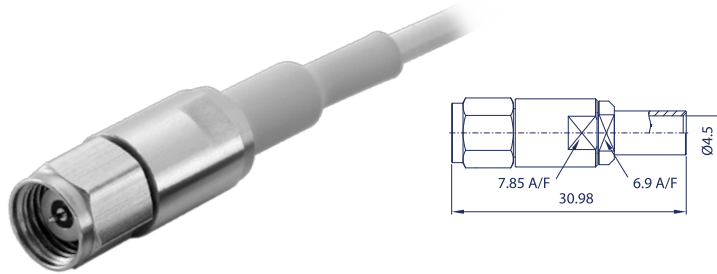
Parts Name	Material	Finish
Body, Metal Parts	Stainless Steel per QQ-S-764	Passivated
Center Contacts	Male: Beryllium copper per QQ-C-530	Gold 50 micro-inches
	Female: Beryllium copper per QQ-C-530	Gold 50 micro-inches
Insulators	Rexolite	None

NOTE: Other Material / Finish is Available on Request.

Mechanical & Environmental /

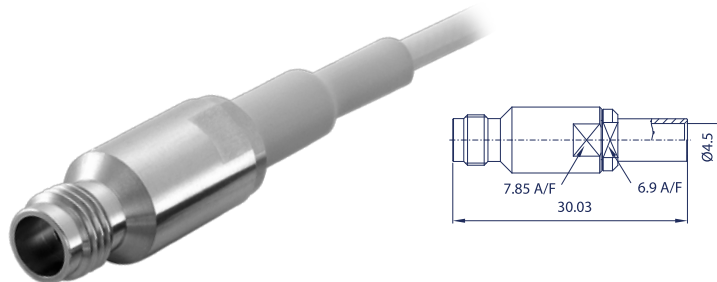
Coupling Torque Recommended	0.8 Nm...1.1 Nm
Coupling Proof Torque	1.65 Nm
Durability (Mating)	500 cycles Min.
Temperature Range	-40°C to 85°C

2.4mm series



DIRECT SOLDER PLUG

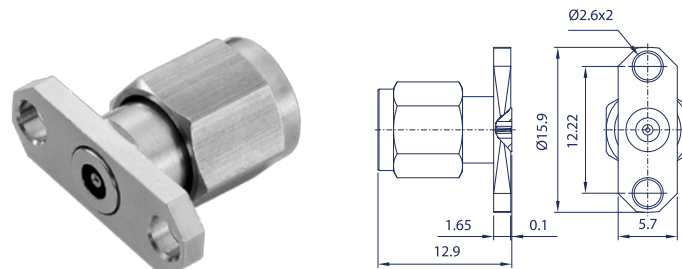
Model No.	Cable Group	Impedance
FL34P2-NS5	RG-405 (.085",.086"), SS-405 IW 1401 IW 1403	50



DIRECT SOLDER JACK

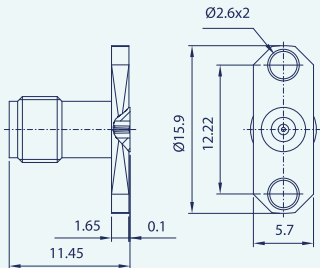
Model No.	Cable Group	Impedance
FL34J2-NS5	RG-405 (.085",.086"), SS-405 IW 1401 IW 1403	50

24



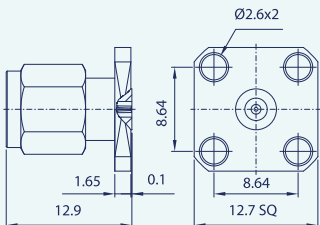
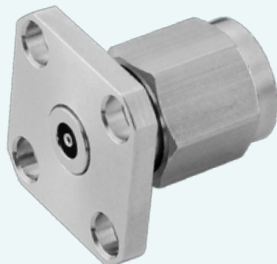
PANEL RECEIPT PLUG-ACCEPTS PIN

Model No.	Cable Group	Impedance
FL34P9-ES505	N/A	50



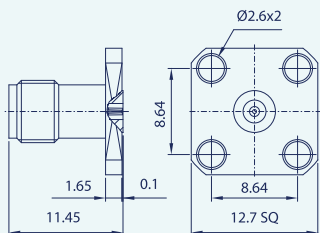
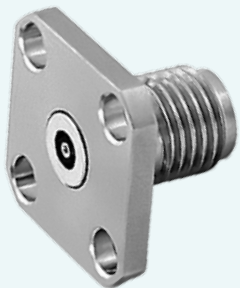
PANEL RECEIPT JACK-ACCEPTS PIN

Model No.	Cable Group	Impedance
FL34J9-ES505	N/A	50



PANEL RECEIPT PLUG-ACCEPTS PIN

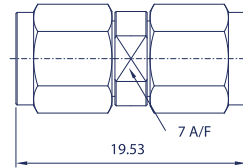
Model No.	Cable Group	Impedance
FL34P9-FS505	N/A	50



PANEL RECEIPT JACK-ACCEPTS PIN

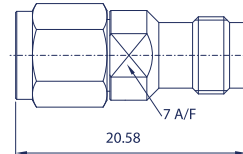
Model No.	Cable Group	Impedance
FL34J9-FS505	N/A	50

2.4mm series



PLUG TO PLUG ADAPTOR

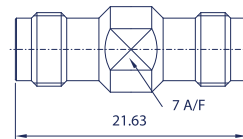
Model No.	Cable Group	Impedance
FL34B8-NS5	N/A	50



PLUG TO JACK ADAPTOR

Model No.	Cable Group	Impedance
FL34E8-NS5	N/A	50

26



JACK TO JACK ADAPTOR

Model No.	Cable Group	Impedance
FL34G8-NS5	N/A	50

2.92mm

CONNECTOR SERIES

INTERFACE MATING DIMENSIONS SPECIFICATIONS

CONTENT:

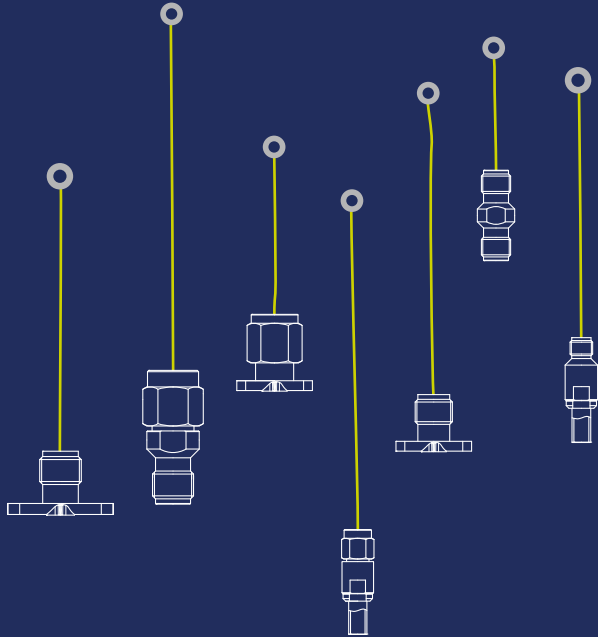
- Direct Solder Plug
- Direct Solder Jack
- Plug To Plug Adaptor
- Plug To Jack Adaptor
- Jack To Jack Adaptor
- Panel Recept Plug*accepts Pin
- Panel Recept Jack*accepts Pin

Bridging Gaps



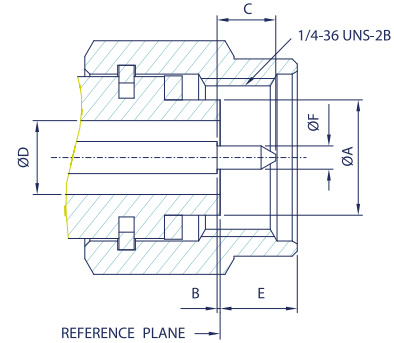
2.92mm series

The 2.92mm series was designed with highly rugged physical interfaces in mind that would mate with 3.5mm and SMA dimensions. The 2.92mm series use an air dielectric, with the performance up to 40 GHz. The outer contact ID is 2.92 mm, and OD is 4.55 mm.



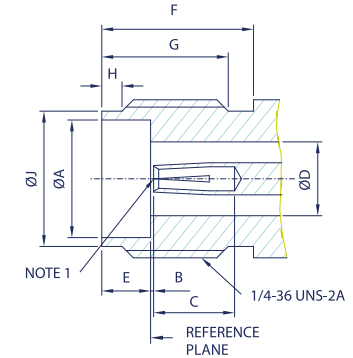
INTERFACE MATING DIMENSIONS

PLUG /



PLUG		
Letter	Millimeters	
	Minimum	Maximum
A	4.53	4.57
B	0.00	0.13
C	1.55	1.65
D	2.89	2.95
E	-	3.28
F	0.91	0.94

JACK /



JACK		
Letter	Millimeters	
	Minimum	Maximum
A	4.6	4.64
B	0.00	0.13
C	2.80	-
D	2.89	2.95
E	1.88	1.98
F	5.90	-
G	4.40	-
H	0.70	0.90
J	5.30	5.40

NOTE 1: I.D. TO MEET VSWR AND CONTACT RESISTANCE WHEN MATED WITH 0.9 / 0.94 MM DIA. PIN.

SPECIFICATIONS

Electrical /

Impedance		50 Ohm
Frequency Range		0 - 40 GHz
Working Voltage		250 VRMS Max.
Dielectric Withstanding Voltage		750 VRMS Min.
VSWR	Straight	1.3 Max.
	Right Angle	1.5 Max.
Contact Resistance	Center Contact	3 Milliohms Max.
	Outer Contact	2 Milliohms Max.
Insulator Resistance		5000 Megohms Min.

Material /

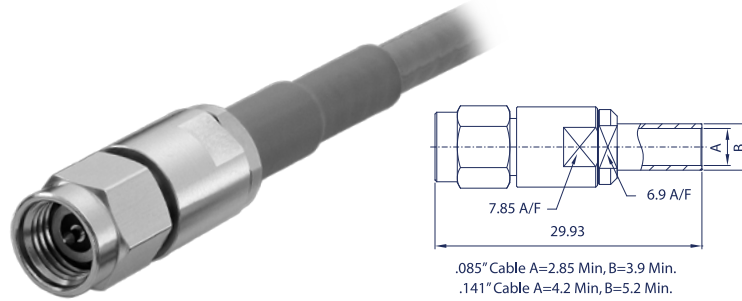
Parts Name	Material	Finish
Body, Metal Parts	Stainless Steel per QQ-764	Passivated
Center Contacts	Male: Brass per QQ-B-626	Gold 50 micro-inches
	Female: Beryllium copper per QQ-C-530	Gold 50 micro-inches
Insulators	Rexolite	None
Clamp Gaskets	Silicone rubber	None

NOTE: Other Material / Finish is Available on Request.

Mechanical & Environmental /

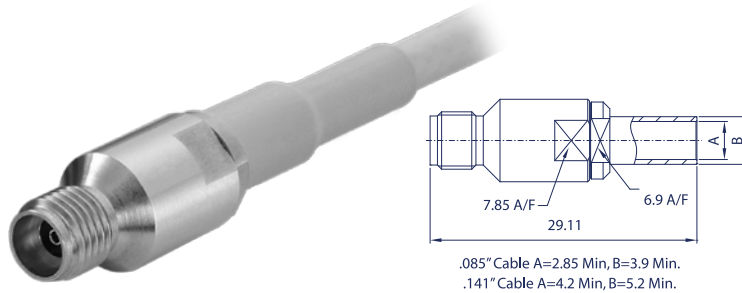
Engagement Force	2 in-lbs. Max.
Disengagement Force	2 in-lbs. Max.
Coupling Nut Retention	60 lbs. Min.
Coupling Proof Torque	15 in-lbs. Min.
Contact Retention	6 lbs. Min.
Durability (Mating)	500 cycles Min.
Temperature Range	-40°C to 85°C
Vibration	MIL-STD-202 Method 204 Test Cond.B.
Salt Spray	MIL-STD-202 Method 101 Test Cond.B.
Thermal Shock	MIL-STD-202 Method 107 Test Cond.B.

2.92mm series



DIRECT SOLDER PLUG

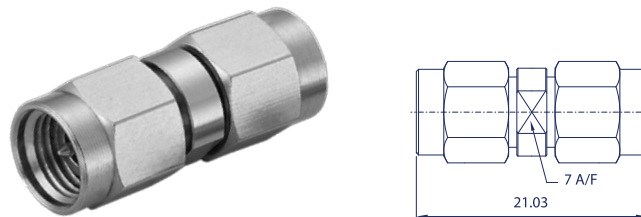
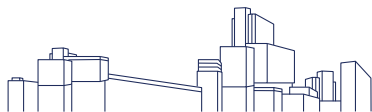
Model No.	Cable Group	Impedance
FL38P2-NS5	RG-402 (.141"), SS-402 RG-405 (.085", .086"), SS-405 IW 1501 IW 1503	50



DIRECT SOLDER JACK

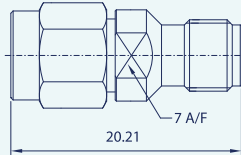
Model No.	Cable Group	Impedance
FL38J2-NS5	RG-402 (.141"), SS-402 RG-405 (.085", .086"), SS-405 IW 1501 IW 1503	50

30



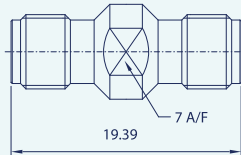
PLUG TO PLUG ADAPTOR

Model No.	Cable Group	Impedance
FL38B8-NS5	N/A	50



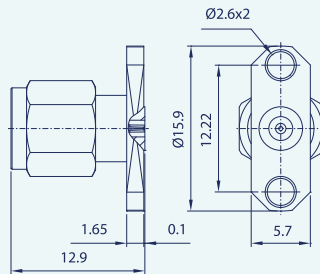
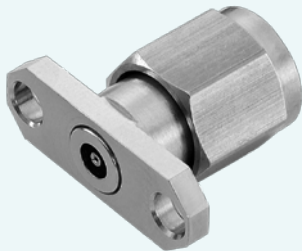
PLUG TO JACK ADAPTOR

Model No.	Cable Group	Impedance
FL38E8-NS5	N/A	50



JACK TO JACK ADAPTOR

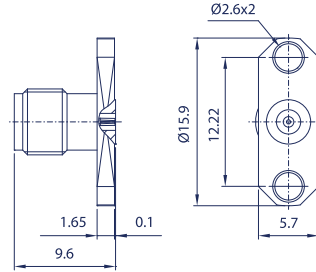
Model No.	Cable Group	Impedance
FL38G8-NS5	N/A	50



PANEL RECEIPT PLUG-ACCEPTS PIN

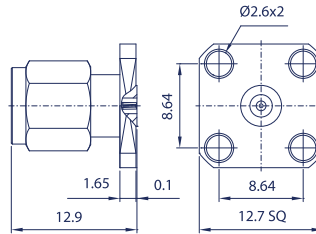
Model No.	Cable Group	Impedance
FL38P9-ES505	N/A	50

2.92mm series



PANEL RECEIPT JACK-ACCEPTS PIN

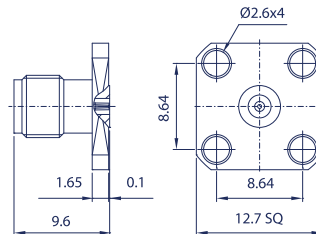
Model No.	Cable Group	Impedance
FL38J9-ES505	N/A	50



PANEL RECEIPT PLUG-ACCEPTS PIN

Model No.	Cable Group	Impedance
FL38P9-FS505	N/A	50

32



PANEL RECEIPT JACK-ACCEPTS PIN

Model No.	Cable Group	Impedance
FL38J9-FS505	N/A	50

3.5mm

CONNECTOR SERIES

INTERFACE MATING DIMENSIONS

SPECIFICATIONS

CONTENT:

Plug To Plug Adaptor

Plug To Jack Adaptor

Jack To Jack Adaptor

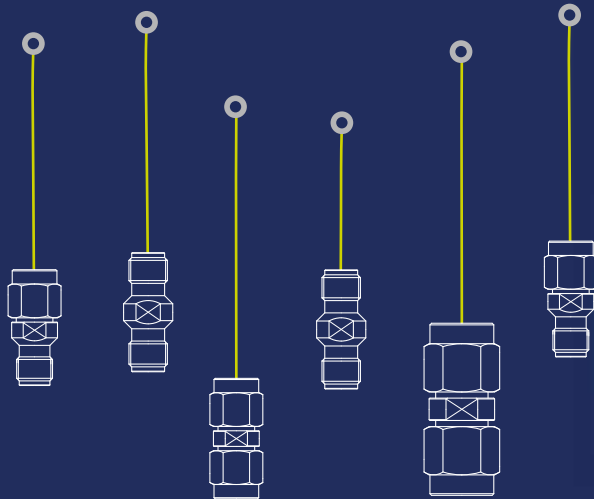
Bridging Gaps



3.5mm series

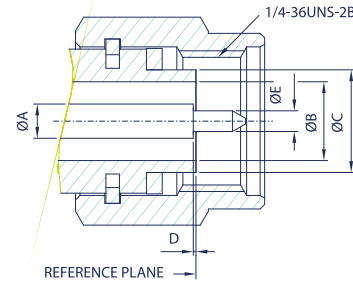
The 3.5mm series was designed with highly rugged physical interfaces in mind that would mate with SMA dimensions, allowing thousands of repeatable connections. The performance is up to 34 GHz.

The outer contact ID is 3.5 mm, and OD is 4.55 mm. The 3.5mm series is compatible with 2.92mm and SMA series. When mated with SMA and other precision SMA type connectors the performance is limited by the connector with lesser performance.

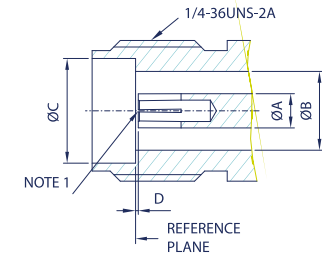


INTERFACE MATING DIMENSIONS

PLUG /



JACK /



PLUG		
Letter	Millimeters	
	Minimum	Maximum
A	1.51	1.53
B	3.49	3.51
C	4.57	4.59
D	0.00	0.08
E	0.91	0.93

JACK		
Letter	Millimeters	
	Minimum	Maximum
A	1.51	1.53
B	3.49	3.51
C	4.63	4.65
D	0.00	0.08

NOTE 1: I.D. TO MEET VSWR AND CONTACT RESISTANCE WHEN MATED WITH 0.91 / 0.93 MM DIA. PIN.

SPECIFICATIONS

Electrical /

Impedance	50 Ohm	
Frequency Range	0 - 34 GHz	
Insertion Loss	$0.03 \times \sqrt{F(\text{GHz})}$ dB Max.	
VSWR	1.3 Max.	
Contact Resistance	Center Contact	3 Milliohms Max.
	Outer Contact	2 Milliohms Max.

Material /

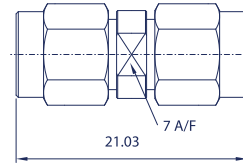
Parts Name	Material	Finish
Body, Metal Parts	Stainless Steel per QQ-S-764	Passivated
Center Contacts	Male: Brass per QQ-B-626	Gold 50 micro-inches
	Female: Beryllium copper per QQ-C-530	Gold 50 micro-inches
Insulators	Rexolite	None

NOTE: Other Material / Finish is Available on Request.

Mechanical & Environmental /

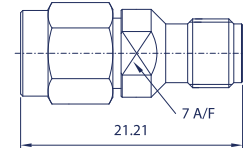
Coupling Torque Recommended	0.8 Nm...1.1 Nm
Coupling Proof Torque	1.7 Nm
Durability (Mating)	500 cycles Min.
Temperature Range	-40°C to 85°C

3.5mm series



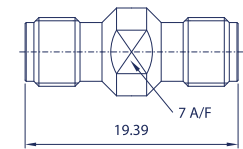
PLUG TO PLUG ADAPTOR

Model No.	Cable Group	Impedance
FL35B8-NS5	N/A	50



PLUG TO JACK ADAPTOR

Model No.	Cable Group	Impedance
FL35E8-NS5	N/A	50



JACK TO JACK ADAPTOR

Model No.	Cable Group	Impedance
FL35G8-NS5	N/A	50



SMP

CONNECTOR SERIES

INTERFACE MATING DIMENSIONS

SPECIFICATIONS

CONTENT:

- Direct Solder Plug
- R/A PCB Mount Plug
- PCB Mount Plug
- SMT End Launch Plug
- SMT Plug
- R/A Direct Solder Jack
- Direct Solder Jack
- Jack To Jack Bullet Adaptor

Bridging Gaps

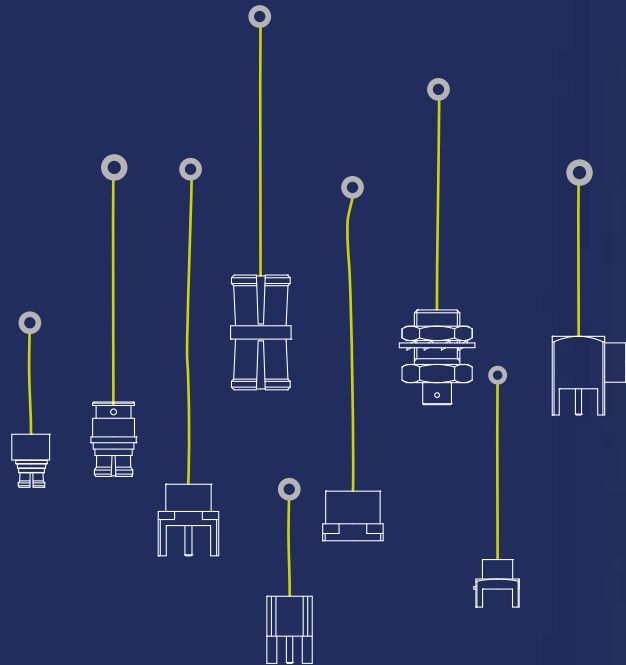


SMP series

Frontlynk developed the SMP series to fulfill the customer's demands for higher-frequency and miniaturized connectors. These are easy snap-on connectors: operable up to 40 GHz.

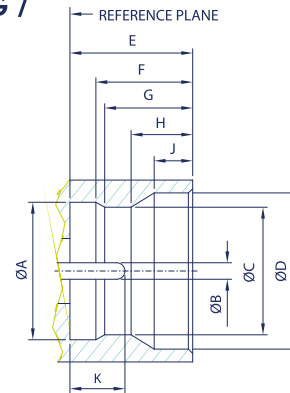
These SMP connectors are ideal for board to board interconnections by joining plugs on different boards with a jack-to-jack adaptor in between.

The SMP interface provides three different levels of retention force: full detent, limited detent, and smooth bore. Full detent is often used for connections with highest retention, limited detent is only for retaining the bullet, and smooth bore is for the lowest retention.

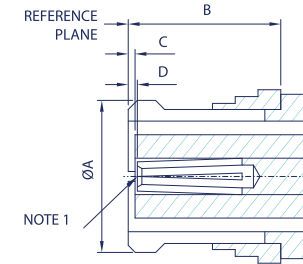


INTERFACE MATING DIMENSIONS

PLUG /

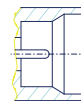


JACK /

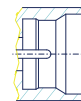


PLUG						
Letter	Millimeters					
	Smooth Bore		Limited Detent		Full Detent	
	Minimum	Maximum	Minimum	Maximum	Minimum	Maximum
A	3.125	3.225	3.125	3.225	3.125	3.225
B	0.356	0.406	0.356	0.406	0.356	0.406
C	3.125	3.225	2.998	3.098	2.896	2.996
D	3.531	3.683	3.531	3.683	3.531	3.683
E	2.784	2.884	2.784	2.884	2.784	2.884
F	-	-	2.185	2.285	2.185	2.285
G	-	-	1.982	2.082	1.982	2.082
H	1.397	1.447	1.397	1.447	1.397	1.447
J	0.839	0.939	0.839	0.939	0.839	0.939
K	1.143	1.397	1.143	1.397	1.143	1.397

JACK		
Letter	Millimeters	
	Minimum	Minimum
A	-	3.34
B	3.35	-
C	0	0.2
D	0	-



Smooth Bore



Limited Detent



Full Detent

NOTE 1: I.D. TO MEET VSWR AND CONTACT RESISTANCE WHEN MATED WITH 0.356 / 0.406 MM DIA. PIN.

SPECIFICATIONS

Electrical /

Impedance	50 Ohm	50 Ohm
Frequency Range	Bullet Adaptor (6.45mm Length) Semi-Rigid Straight Connectors	0 - 40 GHz
	All Other In-Series Adaptors, End Launch Semi-Rigid Right Angle Connectors	0 - 18 GHz
	PCB Mount	0 - 12 GHz
Working Voltage	335 VRMS	
Dielectric Withstanding Voltage	500 VRMS	
VSWR	Bullet Adaptor (6.45mm Length)	1.3 Max. 0 - 26.5 GHz
		1.5 Max. 26.5 - 40 GHz
	Semi-Rigid Straight Connectors	1.2 Max. 0 - 18 GHz
		1.35 Max. 18 - 26.5 GHz
		1.7 Max. 26.5 - 40 GHz
	Semi-Rigid Straight Connectors	1.1 Max. 0 - 4 GHz
1.15 Max. 4 - 12 GHz		
1.2 Max. 12 - 18 GHz		
Semi-Rigid Right Angle Connectors	1.2 Max. 0 - 18 GHz	
	Center Contact	6 Milliohms Max.
Contact Resistance	Outer Contact	2 Milliohms Max.
Insulator Resistance	5000 Megohms Min.	
Insertion Loss	In-Series Adaptors	0.1 \sqrt{F} dB max. / 10 GHz

Material /

Parts Name	Material	Finish
Body, Metal Parts	Brass per QQ-B-626	Gold 3 micro-inches
Center Contacts	Male: Brass per QQ-B-626	Gold 30 micro-inches
	Female: Beryllium copper per QQ-C-530	Gold 30 micro-inches
Insulators	Teflon	None
C Ring	Beryllium copper per QQ-C-530	Gold 3 micro-inches
Crimp Ferrules	Annealed Brass	Gold 3 micro-inches

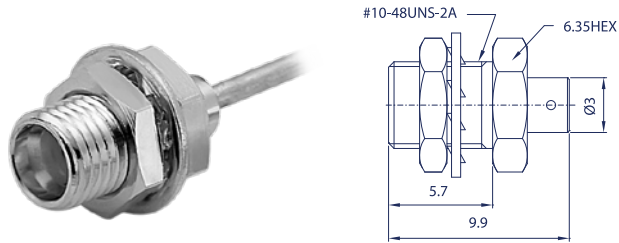
NOTE: Other Material / Finish is Available on Request.

Mechanical & Environmental /

Engagement Force	Full Detent : 68 N Max. Limited Detent : 45 N Max. Smooth Bore : 9 N Max.
Disengagement Force	Full Detent : 22 N Max. Limited Detent : 9 N Min. Smooth Bore : 2.2 N Max
Contact Retention	7 N Min.
Durability (Mating)	Full Detent : 100 cycles Min. Limited Detent : 500 cycles Min. Smooth Bore : 1000 cycles Min.
Temperature Range	-65°C to 155°C
Vibration	MIL-STD-202 Method 204, Condition B.
Temperature Shock	MIL-STD-202 Method 107, Condition B.
Moisture Resistance	MIL-STD-202 Method 106
Mechanical Shock	MIL-STD-202 Method 213, Condition A.

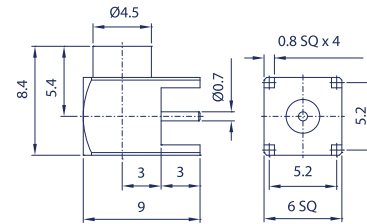
SMP

series



DIRECT SOLDER PLUG

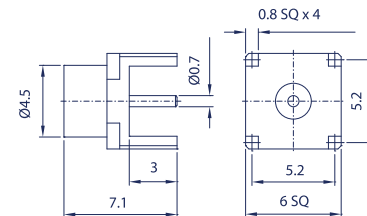
Model No.	Cable Group	Impedance
FL65P2-B55	.085", .086" .047"	50



R/A PCB MOUNT PLUG

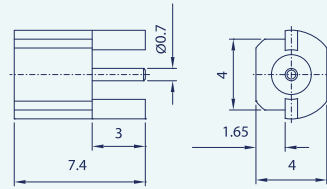
Model No.	Cable Group	Impedance
FL65P5-NR502	N/A	50

40



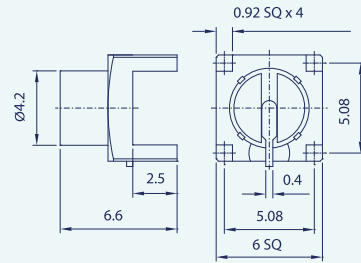
PCB MOUNT PLUG

Model No.	Cable Group	Impedance
FL65P5-NS502	N/A	50



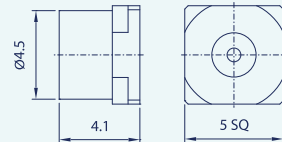
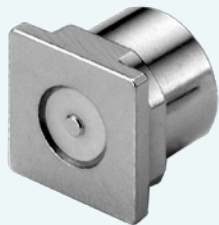
SMT END LAUNCH PLUG

Model No.	Cable Group	Impedance
FL65P6-LS502	N/A	50



SMT PLUG

Model No.	Cable Group	Impedance
FL65P6-NS500	N/A	50

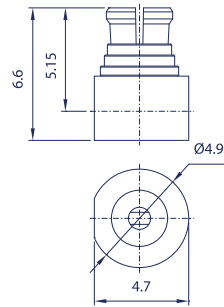


SMT PLUG

Model No.	Cable Group	Impedance
FL65P6-NS502	N/A	50

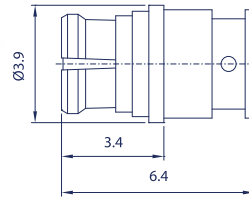
SMP

series



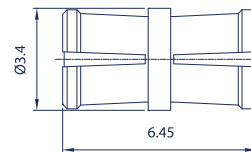
R/A DIRECT SOLDER JACK

Model No.	Cable Group	Impedance
FL65J2-NR5	.085", .086" .047"	50



DIRECT SOLDER JACK

Model No.	Cable Group	Impedance
FL65J2-NS5	.085", .086" .047"	50



JACK TO JACK BULLET ADAPTOR

Model No.	Cable Group	Impedance
FL65G8-NS5	N/A	50

SSMA

CONNECTOR SERIES

INTERFACE MATING DIMENSIONS

SPECIFICATIONS

CONTENT:

- R/A Direct Solder Plug
- Direct Solder Plug
- R/A PCB Mount Jack
- PCB Mount Jack
- Panel Recept Jack

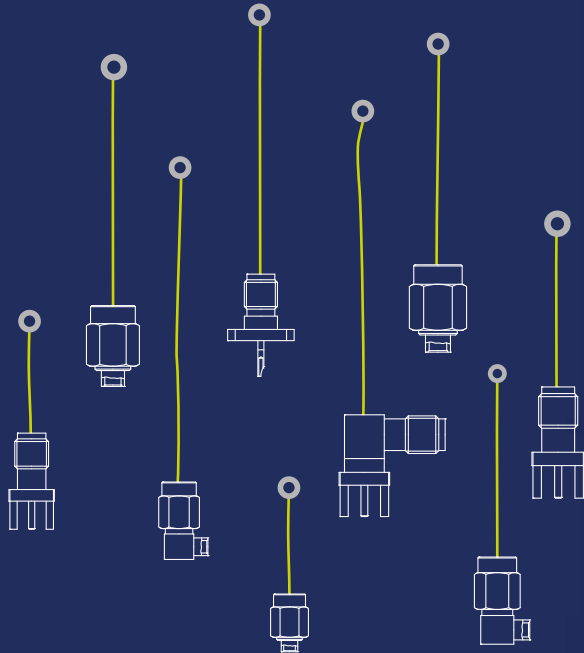
Bridging Gaps



SSMA series

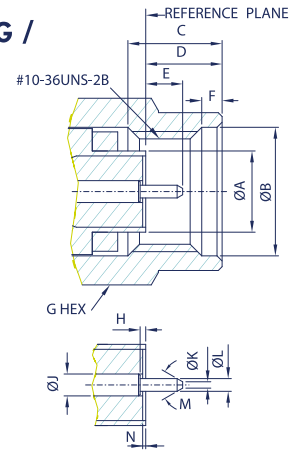
SSMA connectors are micro-miniature, high-frequency connectors with threaded mating (smaller version of SMA series), designed to MIL-PRF-39012 requirements.

Made of Stainless, SSMA connectors provide mechanical ruggedness, no matter how small the connector.

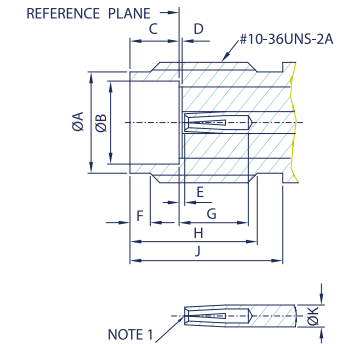


INTERFACE MATING DIMENSIONS

PLUG /



JACK /



NOTE 1

PLUG		
Letter	Millimeters	
	Minimum	Maximum
A	3.15	3.22
B	4.98	5.13
C	3.30	-
D	2.54	3.38
E	1.27	1.65
F	0.38	1.14
G	6.23	6.47
H	0.00	0.25
J	0.86	0.88
K	-	0.25
L	0.50	0.53
M	70°	95°
N	0.00	0.25

JACK		
Letter	Millimeters	
	Minimum	Maximum
A	3.89	4.06
B	3.23	3.30
C	1.90	1.96
D	0.00	0.25
E	0.00	0.25
F	0.51	1.02
G	1.90	-
H	4.32	-
J	5.84	-
K	0.86	0.88

NOTE 1: I.D. TO MEET VSWR AND CONTACT RESISTANCE WHEN MATED WITH 0.5 / 0.53 MM DIA. PIN.

SPECIFICATIONS

Electrical /

Impedance		50 Ohm
Frequency Range		0 - 18 GHz
Working Voltage		250 VRMS Max.
Dielectric Withstanding Voltage		750 VRMS Min.
VSWR	Straight	1.2+0.03 F(GHz) Max.
	Right Angle	1.2+0.033 F(GHz) Max.
Contact Resistance	Center Contact	6 Milliohms Max.
	Outer Contact	2.5 Milliohms Max.
Insulator Resistance		1000 Megohms Min.

Material /

Parts Name	Material	Finish
Body, Metal Parts	Brass per QQ-B-626	Gold 3 micro-inches
Center Contacts	Male: Brass per QQ-B-626	Gold 30 micro-inches
	Female: Beryllium copper per QQ-C-530	Gold 30 micro-inches
Insulators	Teflon	None
Crimp Ferrules	Annealed copper	Gold 3 micro-inches

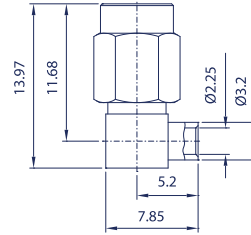
NOTE: Other Material / Finish is Available on Request.

Mechanical & Environmental /

Engagement Force	2 in-lbs. Max.
Disengagement Force	2 in-lbs. Max.
Coupling Nut Retention	22.5 lbs. Min.
Coupling Proof Torque	5 in-lbs. Min.
Contact Retention	4 lbs. Min.
Durability (Mating)	500 cycles Min. (For beryllium copper jack contact only)
Temperature Range	-55°C to 105°C
Vibration	MIL-STD-202 Method 204 Test Cond.B.
Salt Spray	MIL-STD-202 Method 101 Test Cond.B.
Thermal Shock	MIL-STD-202 Method 107 Test Cond.B.

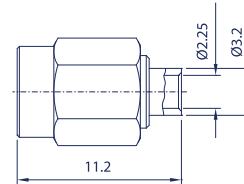
SSMA

series



R/A DIRECT SOLDER PLUG

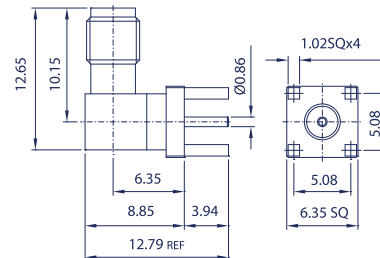
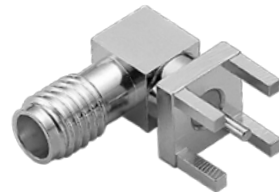
Model No.	Cable Group	Impedance
FL52P2-NR5	.085", .086"	50



DIRECT SOLDER PLUG

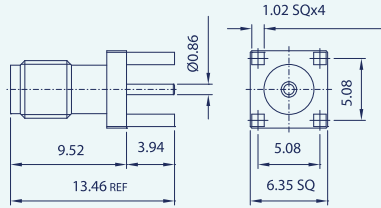
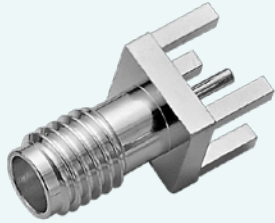
Model No.	Cable Group	Impedance
FL52P2-NS5	.085", .086"	50

46



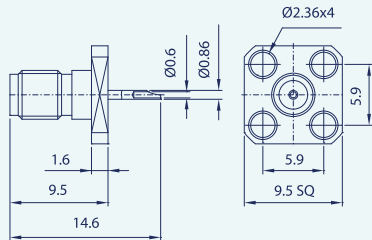
R/A PCB MOUNT JACK

Model No.	Cable Group	Impedance
FL52J5-NR502	N/A	50



PCB MOUNT JACK

Model No.	Cable Group	Impedance
FL52J5-NS502	N/A	50



PANEL RECEIPT JACK


Model No.	Cable Group	Impedance
FL52J9-FS501	N/A	50



FOR MORE INFORMATION,
PLEASE SIGN UP ON
www.frontlynk.com
OR
CONTACT US THROUGH
info@frontlynk.com
AND
Tel: +886-6-356-2626
Fax: +886-6-356-6268



® All Rights Reserved



- Taiwan Tainan

- www.frontlynk.com

Bridging Gaps